

Countdown to Cotton

Production Steps Scramble

Place the following sentences in the correct order, then use them to complete your "Countdown to Cotton" Booklet.

Cotton is stored in the field in large modules.

At the gin revolving circular saws separate the cotton lint from the seed.

Cotton flower develops into a boll, which opens to form a fluffy lock.

The cloth is made into jeans, shirts, towels and other cotton products we use every day.

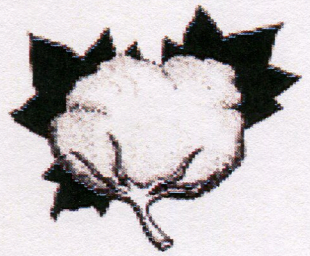
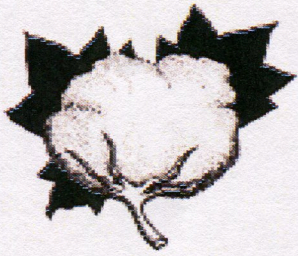
The lint is pressed into 480 pound bales.

The bales are delivered to a textile mill where the cotton is cleaned, washed and spun into yarn.

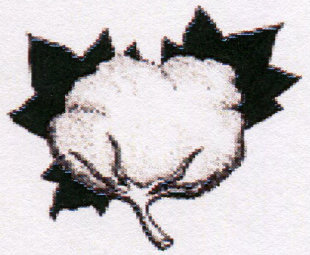
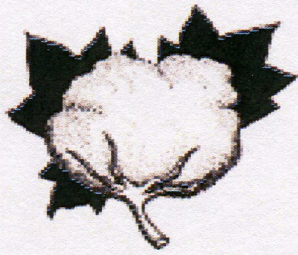
When all the bolls have matured the cotton locks are harvested using a cotton stripper.

Large looms weave the yarn into cloth.

The modules are transported to the cotton gin.

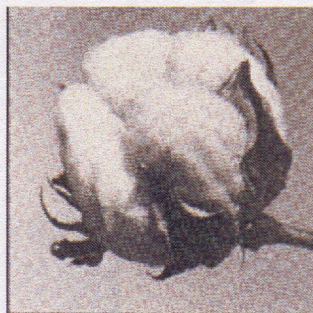


Countdown to Cotton

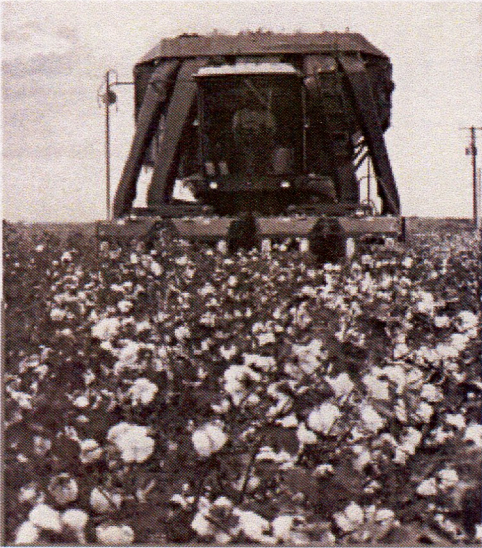


1

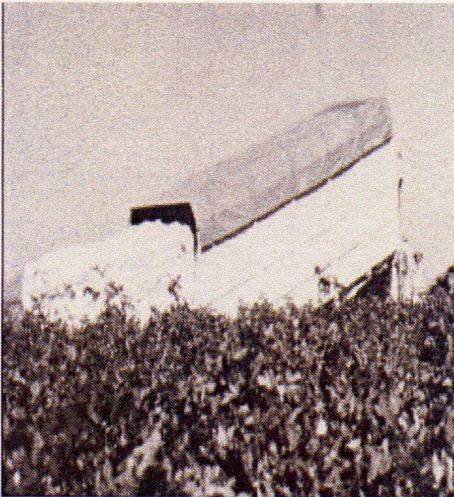




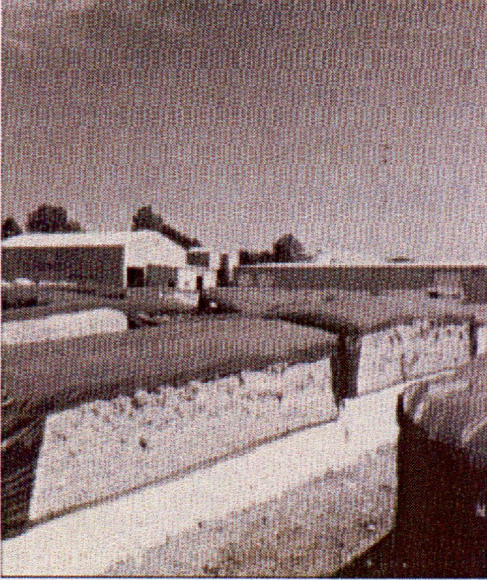
2



3



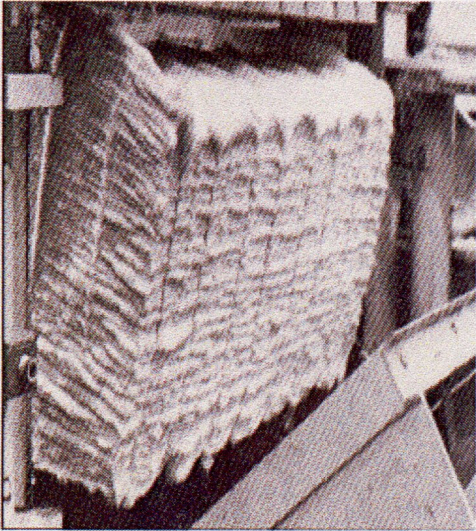
4



5



6



7

